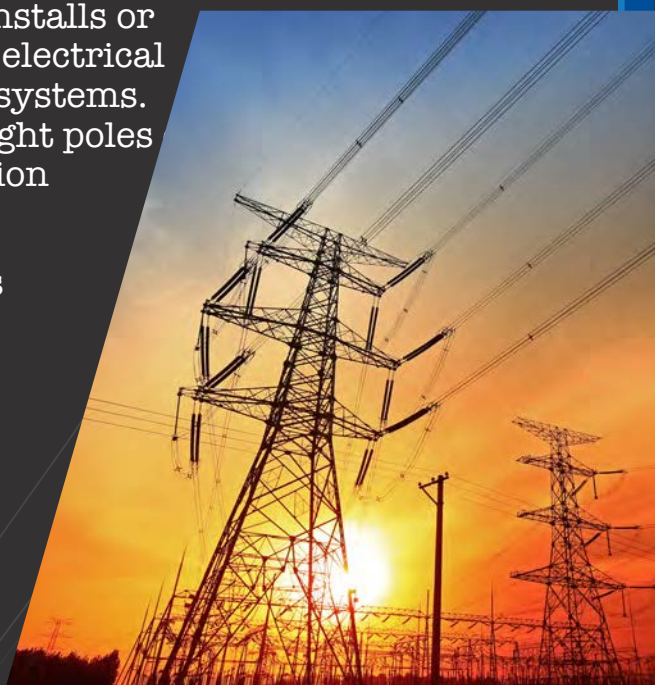


# LINE WORKER

A Lineworker (also known as a powerline installer), installs or repairs cables used in electrical power or distribution systems. They may also erect light poles heavy duty transmission towers.

- Typically outdoors
- Operating heavy equipment
- Local government agencies
- Communications organizations



## How do you become a LINEWORKER?

Most companies require workers to have a high school diploma or equivalent. In addition to a high school diploma this career requires knowledge of electricity or electronics. These skills can be obtained through military service, career training programs, or community colleges.

According to Oklahoma Works lineworkers represent a growing high demand career and is ranked 34 on Oklahoma's Critical Occupations list.

## EDUCATION



## SIMILAR OCCUPATIONS

### FIELD SERVICE TECHNICIAN/MECHANIC

Diagnoses, adjusts, repairs, or overhauls mobile mechanical, hydraulic, and pneumatic equipment. This includes cranes, bulldozers, graders, and conveyors, used in construction, logging, and surface mining.

VS

### SERVICE UNIT OPERATOR: OIL, GAS, & MINING

Operates equipment to increase oil flow from producing wells or to remove stuck pipe, casing, tools, or other obstructions from drilling wells. May also perform similar services in mining exploration operations. Includes fishing-tool technicians.

VS

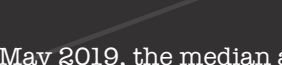
### STATIONARY ENGINEERS & BOILER OPERATORS

Operates or maintains stationary engines, boilers, or other mechanical equipment to provide utilities for buildings or industrial processes. Operate equipment, such as steam engines, generators, motors, turbines, and steam boilers.



HIGHEST 10 PERCENT EARNED MORE THAN

**\$103,500**



LOWEST 10 PERCENT EARNED LESS THAN

**\$38,810**

NATIONAL MEDIAN ANNUAL WAGE FOR POWER-LINE INSTALLERS AND REPAIRERS

**\$72,520**

In May 2019, the median annual wages for power-line installers and repairers in the top industries in which they worked were as follows:

ELECTRIC POWER GENERATION, TRANSMISSION AND DISTRIBUTION **\$79,220**

ELECTRICAL CONTRACTORS AND OTHER WIRING INSTALLATION CONTRACTORS **\$67,280**

LOCAL GOVERNMENT, EXCLUDING EDUCATION AND HOSPITALS **\$66,920**

POWER AND COMMUNICATION LINE AND RELATED STRUCTURES CONSTRUCTION **\$58,510**

Occupational Outlook Handbook, <http://bit.ly/LWHandbook>

OK College Start, <http://bit.ly/1V8bdb0>

OK Career Guide, <http://bit.ly/1KCaxFy>

Oklahoma Critical Occupations list, <http://bit.ly/2Clqfh4>

Oklahoma Works, <https://bit.ly/3l26yo1>



**OKLAHOMA**  
Education